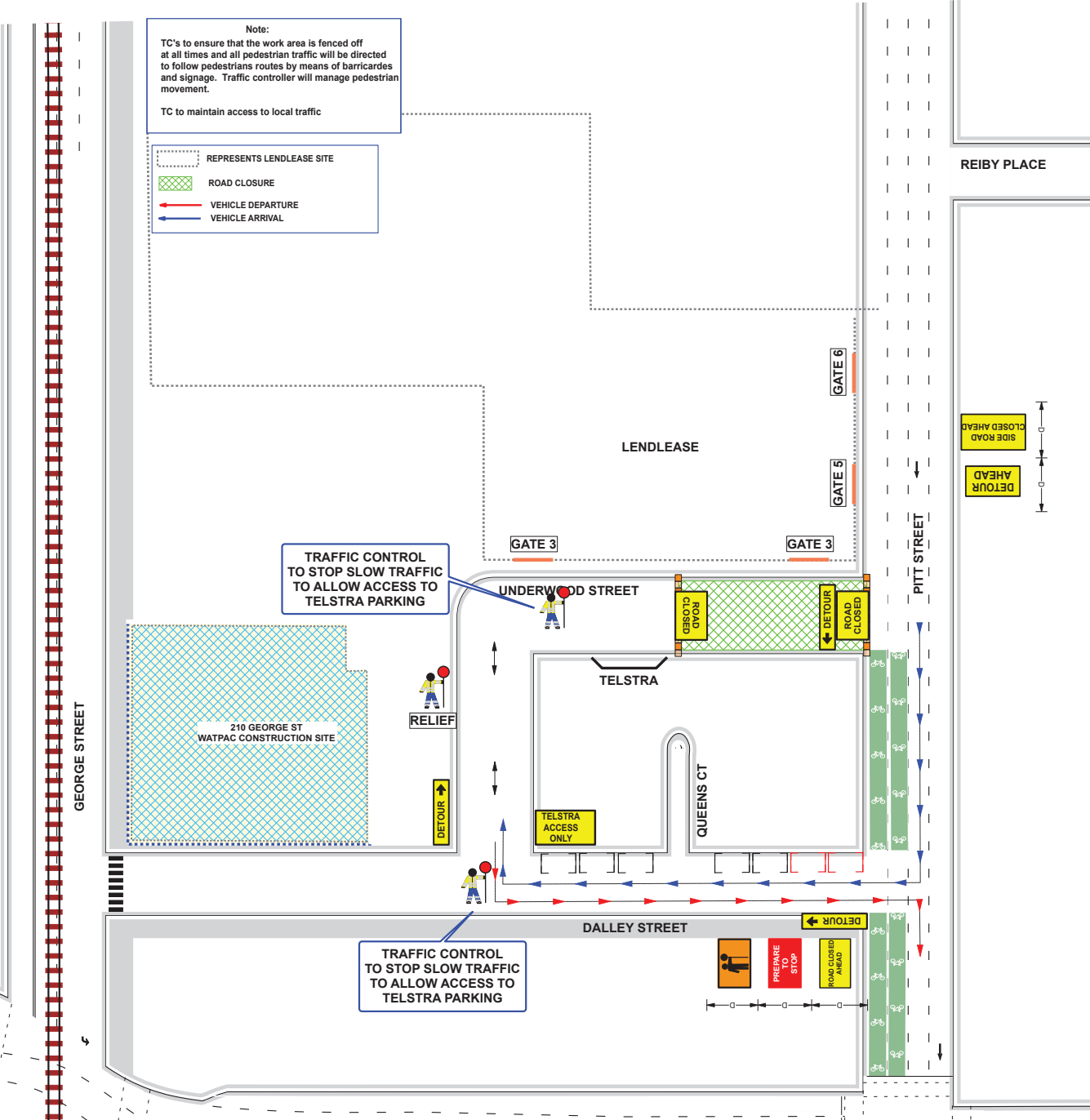
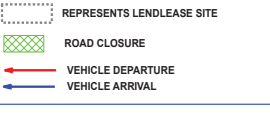




Note:
TC's to ensure that the work area is fenced off at all times and all pedestrian traffic will be directed to follow pedestrian routes by means of barricades and signage. Traffic controller will manage pedestrian movement.
TC to maintain access to local traffic



AMENDED BY	
CERT #	
TIME	
DATE	

BRIDGE STREET

Date: 28/09/2021 Author: Aleksandra Moisejenkova Project: UNDERWOOD ST, SYDNEY
Comments:
Drawn: Aleksandra Moisejenkova
PWZTMP : 0051855538



DRAWING NOT TO SCALE
IF THIS TCP IS IMPLEMENTED BY A TRAFFIC CONTROL COMPANY OTHER THAN COMMERCIAL TC, COMMERCIAL TC BEARS NO LIABILITY FOR THE SET UP AND ACCURACY OF THIS TCP.
RMS Accredited Traffic Controllers will adhere to this TCP according to TCW Manual V6 and relevant SWMS. Signs and Devices are to be placed in accordance with this TCP. Modification may be made by persons holding a RMS "Design and Audit" Qualification only. All signs and devices used must comply with Australian Standards AS1742.3. This document is copyright/property of Commercial TC PTY LTD. This drawing shall only be used for the purpose for which it is intended.

TABLE 4.2

VALUE OF DIMENSION D

Speed of traffic km/h	Dimension D m
45 or less	0 to 5
46 to 55	15
56 to 65	45
Greater than 65	Equal to speed of traffic, in km/h